

Northwest Orange County Areawide Transportation Study (NOWOCATS)

WHAT IS LEVEL OF SERVICE?

This map shows the Level of Service (LOS) for the intersections and roadway segments within the study area.

LOS is a way to describe the efficiency and effectiveness of a road or intersection from a driver's perspective.

Similar to grades in school, LOS uses letters A through F, with A being the best condition and F being a failing condition.

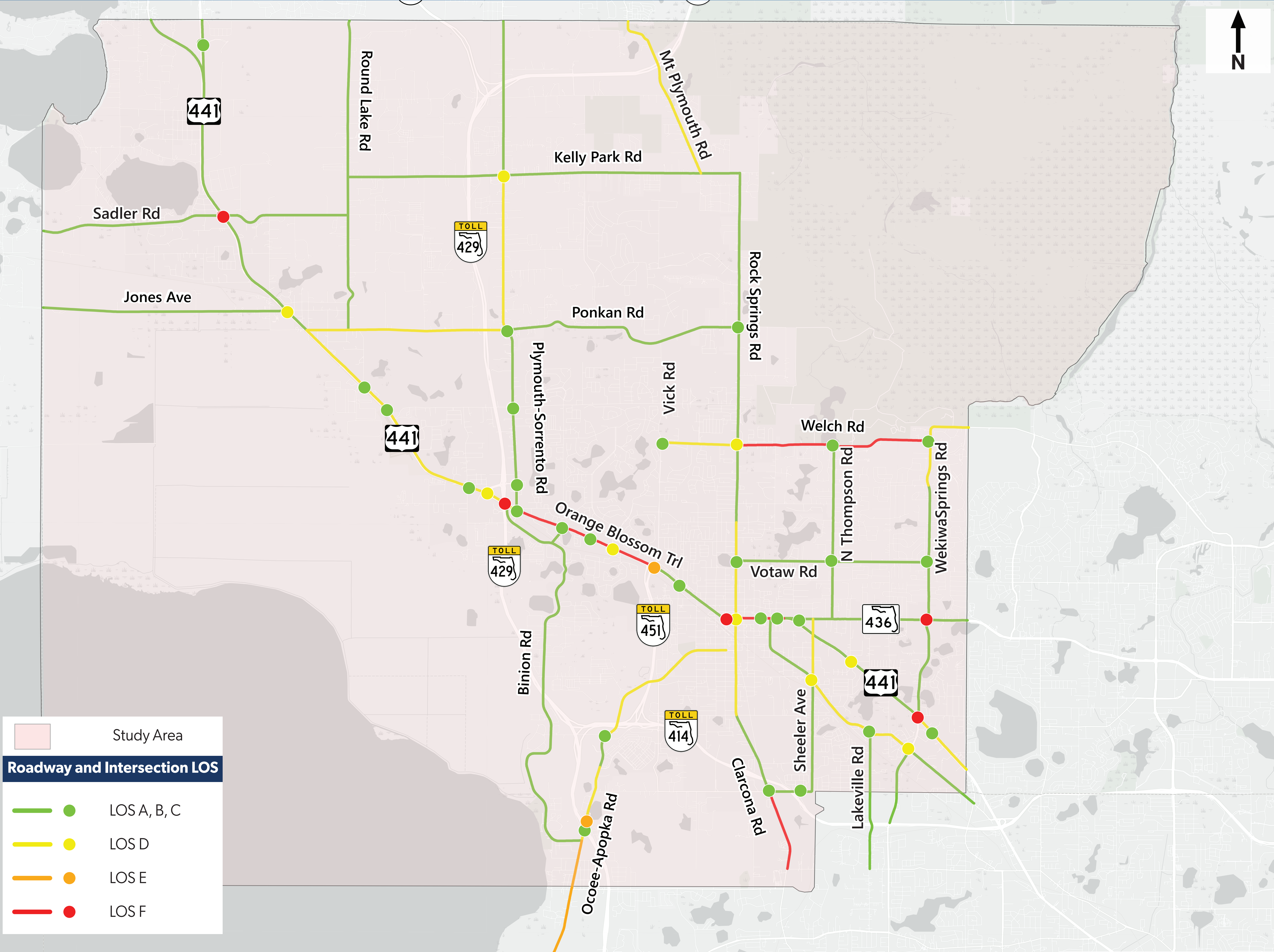
LOS A, B, and C mean traffic is generally flowing smoothly with shorter delays.

LOS D means busier conditions with noticeable slowing and more frequent stops.

LOS E means heavy congestion and longer delays.

LOS F means very congested, stop-and-go traffic with long wait times.

Study Area Operations		
	Roadway Segments	Intersections
LOS A - C	69%	61%
LOS D	22%	20%
LOS E	2%	7%
LOS F	8%	11%



Existing Traffic Operations (2025)

